



**ADVANCED PANEL SYSTEM  
AS A BUILDING TECHNOLOGY  
INSTALLATION PLATFORM**

**ituGraf®**

# ItuGraf is always fit for purpose

The ItuGraf heating and cooling panel system provides numerous significant benefits for your indoor climate and energy efficiency.

Our state-of-the-art panel system also functions as the perfect platform for your building technology. We can tailor a solution that incorporates the building technology devices and control sensors designed for your space in the best possible way.

When panels are fitted with the necessary integration solutions at the plant, the on-site installation and check-ups are quick and easy to perform.

Pre-fitted solutions are cost-efficient, reduce on-site work time and improve construction quality.



# Lighting

## Stripe or Round

Integrating LED lights into the ceiling panel reduces the installation work required on site.

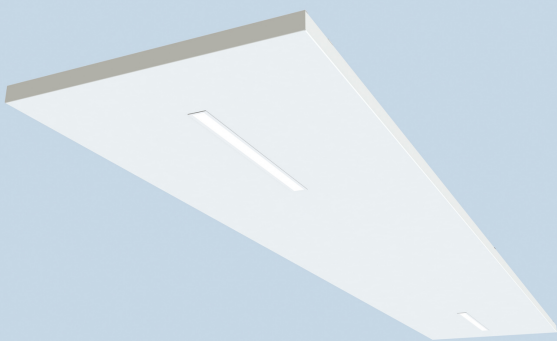
The luminaire type and location are always chosen to meet the needs of the particular space.

The luminaires are fitted into the ready-made installation locations, which are surrounded by the technical fittings, on the graphite panel.

The lighting is controlled via an ON/OFF, DALI or wireless system depending on the needs of the customer and site.



**ituGraf**<sup>®</sup>

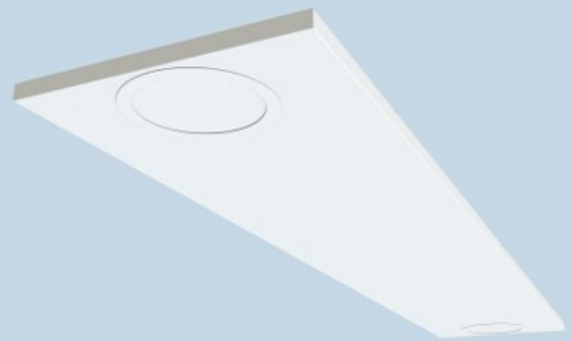


**Stripe luminaires** are installed lengthwise in the middle of the panel.

Depending on the size of the panel, two or three luminaires can be integrated into it.

Power: 2 luminaires 30W, 3 luminaires 45W,  
4 luminaires 60W

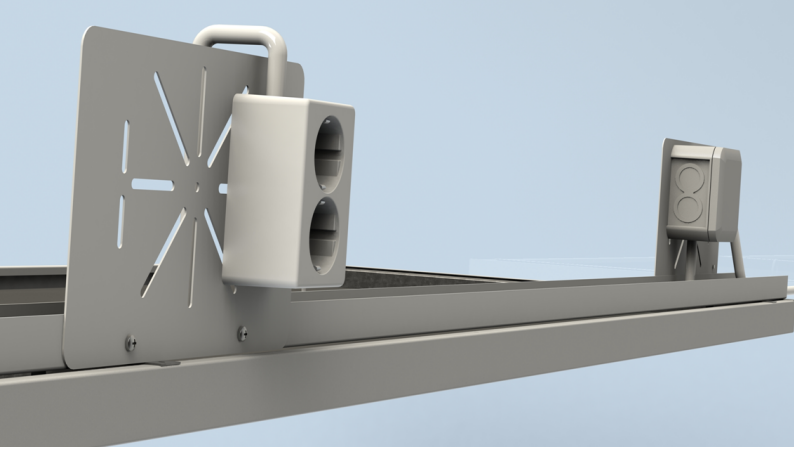
Luminous efficacy: 150lm/W  
Beam opening angle: 60° x 90°  
Optics: UGR



**Round luminaires** are installed at both ends of the panel.

No more than two luminaires can be fitted into one panel.

Power: 2 luminaires 44W  
Luminous efficacy: 120lm/W  
Beam opening angle: 120°  
Optics: Frosted

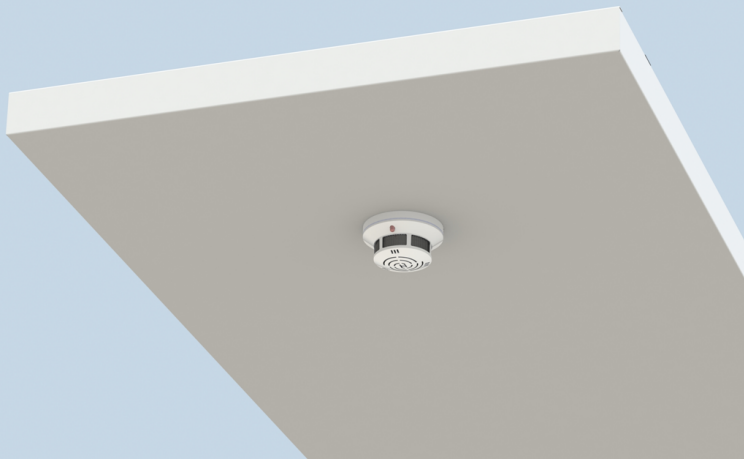
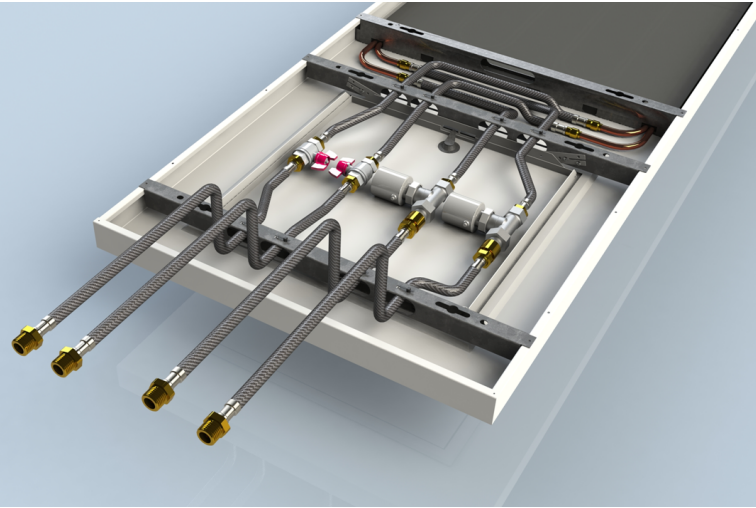


## Electrical and data sockets

When panels are installed above work stations, electrical fittings become easily accessible. Electrical and data sockets are installed on the mounting plates that are fixed onto the cable tray on top of the panel.

## Access panels, valves and actuators

We install any valves and actuators that are part of our system behind an access panel for easy adjustments and maintenance work. The access panel shortens the area available for the technology by 600mm. Our standard solution includes an access panel, thermostatic valve, actuator and shut-off valve.

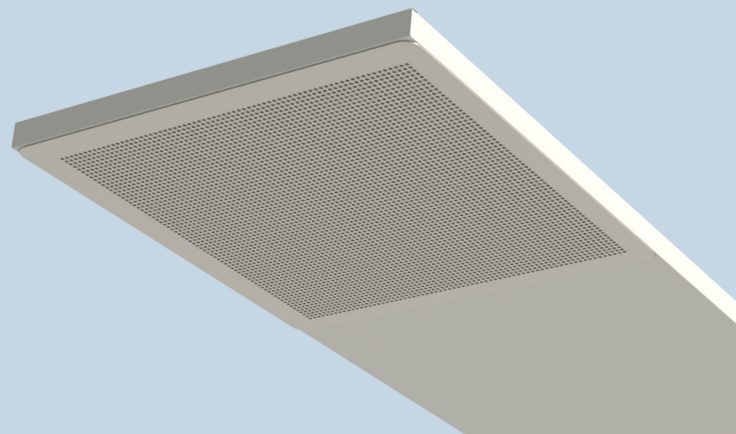


## Fire and smoke detectors

The ItuGraf is an excellent mounting platform for fire protection products such as sprinkler heads and smoke detectors. The panels can be equipped with special installation holes for these products. The maximum hole size is 70 millimeters.

## Ventilation valves

The panels can be fitted with locations for various types of ventilations valves. These locations are always designed to meet the needs of the space.



**ituGraf®**



Contact us:  
[sales@itula.fi](mailto:sales@itula.fi)  
+358 20 7435 500

For more information,  
please visit our new website:  
[www.itula.com](http://www.itula.com)